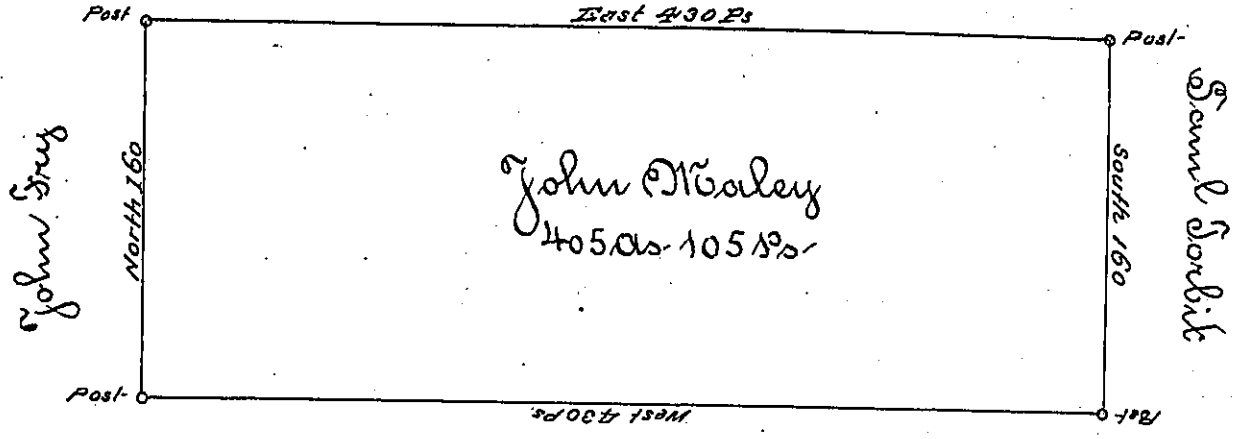


John Steiner



John Bunn

Situated on the Waters of Two-lick Creek including some springs - in
 in Wheatfield Township, Westmoreland County: contain 405 Acres & 105
 perches and allowance of six per Cent for Roads &c Surveyed for John
 Nealey ^{Nealey} the 24th Day of Novemb: 1794 on Warrant dated the 3^d Day of
 May 1795 ~

James Ross D.D.

Daniel Broadhead Esq D. G.

IN TESTIMONY that the above is a copy of the original remaining on file in the
 Department of Internal Affairs of Pennsylvania, made con-
 formably to an Act of Assembly approved the 16th day of
 February, 1833, I have hereunto set my Hand and caused
 the Seal of said Department to be affixed at Harrisburg, this

first day of August 1894

Thos J. Stewart
 Secretary of Internal Affairs